



# Installation Guide for Cutout Insert



## Basic Steps for professional looking cutouts every time!

- Determine cutout location on the plywood and directly on the vinyl in front.
- Carefully cut plywood (jigsaw) and foam to the correct size without cutting the vinyl.
- Figure 1 illustrates how to cut the vinyl (dotted line).
- Figure 2 shows cutouts at the edge of the pad.
- Fold back the triangular shape pieces.
- Place the PROMATS CUTOUT INSERT inside this area. Place the seam in a top corner. Pull the vinyl to the back side.

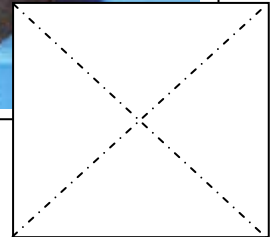
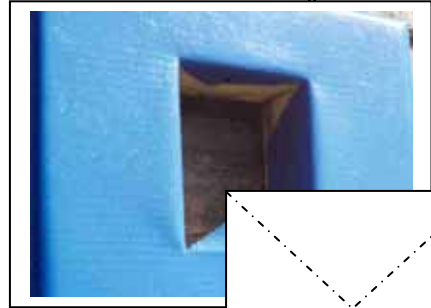


Figure 1

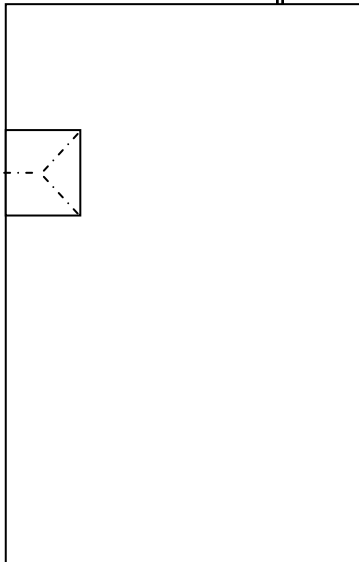


Figure 2

Front Welting Lip should be tight against the front edge of the cutout area. Position and staple flaps on back side. HH66 Vinyl Cement should also be used just behind the welting on the side of the insert.

**Caution:** Do not cut the hole too large as the sides of the insert are rigid and an unsightly space will exist.

Templates are available.

Thank You for choosing PROMATS  
1-800-678-6287